

For the Architectural Designer

# AI Workflow Guide.

Level up your design workflow with Veras AI & Enscape.



✦ Prompt

---

---

---

# Your journey

## 1. Getting started

It takes 3 seconds

## 2. Early-Stage Ideation & Exploration

It is all about speed!

Explore a wide range of possibilities without committing to detailed modeling.

### a. Generate & Refine Design Options

Explore different massing concepts, facade treatments, and material palettes.

### b. Test Facade & Material Options

Visualize different material combinations on your building's exterior.

## 3. Design Development & Presentation

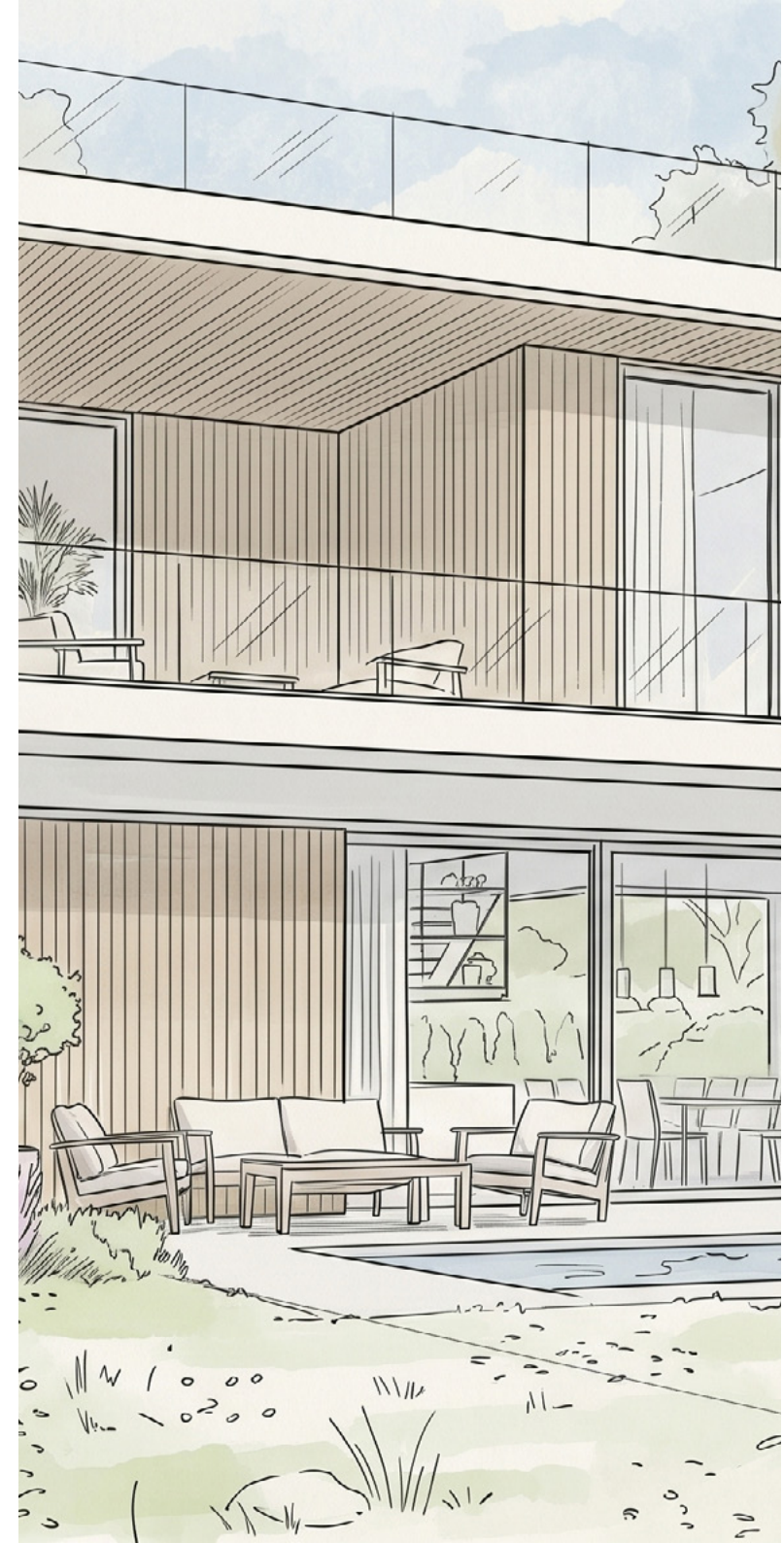
Refine your chosen design and create compelling visuals that communicate your intent with clarity and style.

### a. Create Stylized Views

Produce beautiful, artistic visuals perfect for client presentations, competition boards, or internal reviews.

### b. Add Context & Entourage

Bring your scene to life by adding realistic people, vegetation, and contextual elements.



With AI, we're seeing teams slash early-stage **design iteration times by up to 70%.**

What used to take a week of manual modeling and rendering can now be explored in a single afternoon.

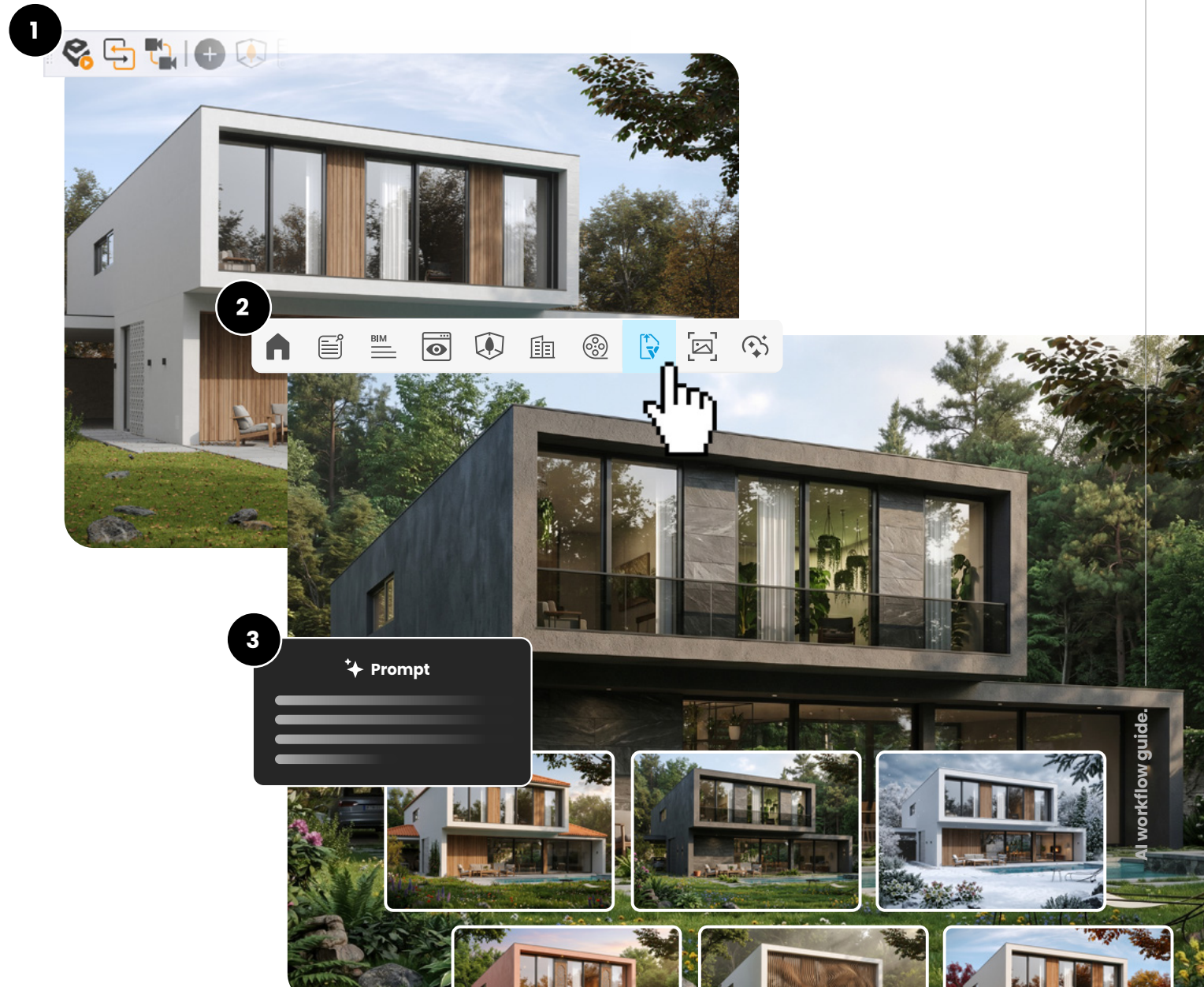
[How AI is reshaping Architectural Design & Visualization in 2026 Report](#)



# Getting Started: Veras in Enscape

- 1** Open your model in your design application (Revit, SketchUp, etc.).
- 2** Start Enscape.
- 3** Open Veras from the Enscape toolbar.

It's that simple.



# Early-Stage Ideation & Exploration

This stage is all about speed and exploring a wide range of possibilities without committing to detailed modeling.

## Generate & Refine Design Options

### How to do it:

1. Open the **Compose** tab.
2. Select the **Nano Banana** render engine.
3. Write a **simple prompt**, like: *"Modernist residential home, timber cladding, large glass windows, set in a forest."*
4. Click **Render** and generate multiple options in seconds.
5. Found a direction you like? Refine your prompt and re-render.  
Example: *"Modernist residential home, brick base, timber upper floor, large glass windows, set in a forest."*

**Pro-Tip:** Use the **Render Selection** feature to focus the AI on a specific part of your model, like a facade or roof, for targeted ideation.

3-5 Credits per image



## Test Facade & Material Options

Instantly visualize different material combinations on your building's exterior without touching your 3D model.

### How to do it:

1. Write a descriptive prompt focused on **materials**.  
**Example:** "Brutalist concrete facade, weathered steel panels, floor-to-ceiling glazing."  
**Good:** white walls, white ceiling, forest seen through large windows  
**Bad:** white room, in a forest  
Example: "Warm wooden facade, weathered steel panels, floor-to-ceiling glazing."
2. Click **Render** and confirm the result.
3. Iterate by updating the material keywords in your prompt.  
**Good:** white walls, white ceiling, forest seen through large windows  
**Bad:** white room, in a forest  
Example: "Warm wooden facade, weathered steel panels, floor-to-ceiling glazing."
4. **Re-render** to see variations.

3-5 Credits per image



# Design Development & Presentation

Now refine your chosen design and create compelling visuals that communicate your intent with clarity and style.

## Create Stylized Views

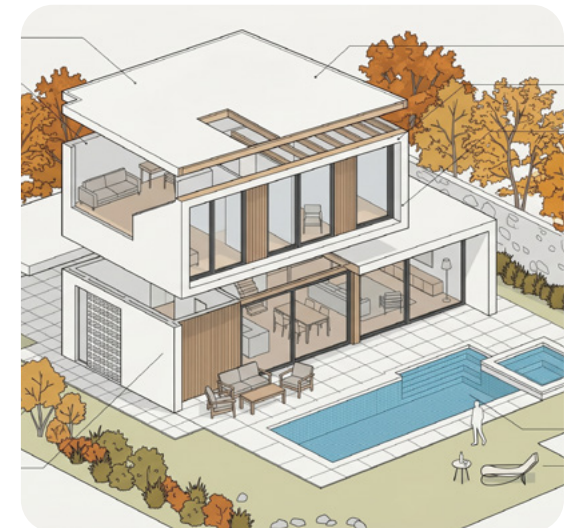
Produce beautiful, artistic visuals perfect for client presentations, competition boards, or internal reviews.

### How to do it:

1. Write a **prompt** describing the **artistic style** you want.  
**Example:** *“Conceptual sketch style, hand-drawn lines, watercolor wash.”* Or: *“Axonometric diagram, minimal color palette.”*
2. Click Render.

**Pro-Tip:** Use **Image Reference** to guide your render toward a specific look. Upload up to 4 reference images and set each one as a Style reference — the AI will carry that image’s artistic style, rendering technique, and visual treatment into your output.

9-11 Credits per image



## Add Context & Entourage

Finally, bring your scene to life by adding realistic people, vegetation, and contextual elements with a simple text prompt.

### How to do it:

1. Describe the **desired atmosphere, time of day, and specific elements** you want to add in your prompt. **Example:** “A sunny afternoon, people walking and talking, lush trees, modern street furniture.”
2. Hit **Render**.

Veras will intelligently place these elements into your scene, respecting perspective and scale.

**Pro-Tip:** Use **Image Reference** to place specific objects into your scene. Set the reference type to Object, drop in a photo of a chair, light fixture, planter, or any design element, and the AI will incorporate it into your render.

9-11 Credits per image



### ★ Prompt

Add people in the poolside area sitting on the furniture, swimming in the pool and add a barbeque on the left side with a person cooking on it. Make it sunny.





chaos

## Ready to Redefine Your Workflow?

You've seen how AI can transform your design process.  
Now it's your turn.

### Master Your AI Workflow

Go beyond this guide with our free, in-depth Chaos Academy courses.

- ◊ [Enhance your Enscape workflow with Veras for Exteriors.](#)
- ◊ [Enhance your Enscape workflow with Veras for Interiors.](#)

### Get More Chaos Credits

Got hooked? Take it to the next level with more AI power within Enscape and **complimentary credits** reach out to your Account Manager.

### Share Your Creations

Join the community and show us what you've created with Veras AI.

Tag @ChaosEnscape on social media.